



Westmorland
& Furness
Council

Cumbria Local Nature Recovery Strategy

Public Consultation Drop-in Session

cumbrialnrs.org.uk



Purpose of Today's Session

Introduce you to the Westmorland and Furness Council Local Nature Recovery Strategy (LNRS) team:

- **Nicola Jordan:** LNRS Strategic Lead
- **Megan Lindeman:** Technical Support Officer

Our Purpose Today:

We're here to guide you through the process of our Local Nature Recovery Strategy. Specifically, we will cover:

- Understanding the LNRS and its goals.
- A brief walkthrough of the consultation process.
- How you can actively participate and have your say.
- Instructions on how to complete the official online survey to submit your formal feedback.

Important Note:

- Please be aware that any feedback or comments shared verbally during today's session will **not** be considered a formal response to the consultation. To ensure your views are officially included, it is essential to complete the online survey.



What is nature recovery and why do we need it?

Nicola Jordan



The State of Nature: England

England is widely considered to be one of the most nature-depleted countries in the world. The Environment Act 2021 brings into law requirements to halt the decline of species and improve our natural environment.

Average 32% decline in species' abundance since 1970.



Average 18% decrease in the distributions of invertebrate species.

Decreases in the distributions of over half of plant species.



13% of 8,840 species in England are threatened.

What do we mean by nature recovery?

- In general, nature recovery means to **halt or reverse the decline in the number and range of habitats and species**.
- This can be done primarily by either **managing and enhancing existing habitats**, or **expanding and creating new areas of habitat**, to help the native species that those habitats support.
- It can also include **specific actions to benefit a particular species** or controlling invasive non-native species to allow native species to flourish.
- It's all about building **resilient landscapes** for the future.
- And... ***“Making space for nature”***



What is the Local Nature Recovery Strategy?

- **Cumbria is one of 48 strategy areas in England** that are required by the Environment Act 2021 to develop a Local Nature Recovery Strategy (LNRS) for their area. Once submitted to Defra, these strategies will be reviewed every 3 to 10 years.
- The LNRS aims to restore biodiversity by drawing on **existing data, strategies and guidance**, alongside **local knowledge**, to guide action for nature recovery so that it delivers maximum benefit.
- The LNRS identifies key '**priorities**' and '**potential measures**' for nature recovery and shows the areas that are most suitable for these.

What do we need to do? And **where**?

Who has produced the Cumbria LNRS?

The LNRS has been developed collaboratively with a wide range of stakeholders in Cumbria.

Westmorland and Furness Council has led on the preparation of the Cumbria LNRS as the Responsible Authority, supported by the following 'Supporting Authorities':



Over 650 additional organisations and interested parties have been directly involved or informed throughout the development of the LNRS.



What is in the Cumbria LNRS?

Megan Lindeman



What forms the Cumbria LNRS?

The LNRS is formed of two parts:

- The **Statement of Biodiversity Priorities**
- The **Local Habitat Map**

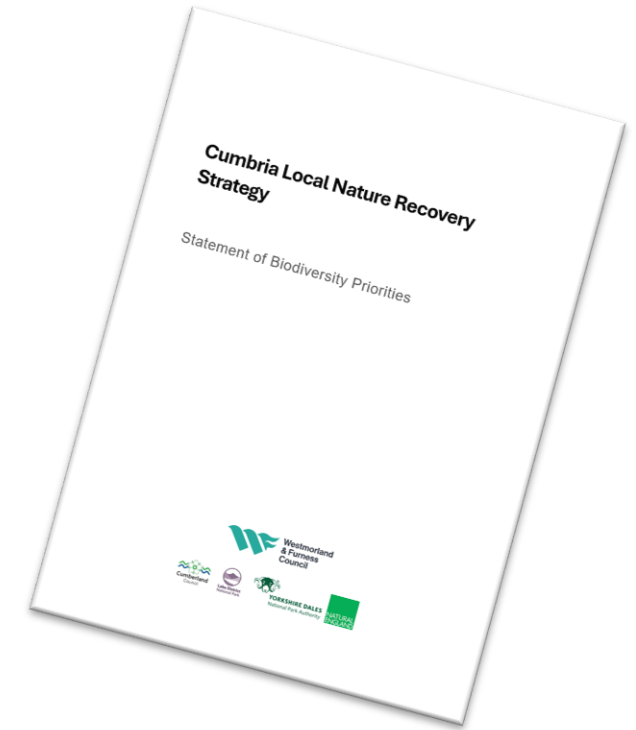
The habitats, priorities, and potential measures in the document identify what we want to do.

The potential measures are then presented on the map, showing where these would deliver the greatest benefit.



Statement of Biodiversity Priorities

- Identifies and describes the **key habitats and species** within Cumbria.
- Identifies the **pressures and threats** to nature in Cumbria.
- Identifies **opportunities** for nature recovery and the wider benefits from these.
- Identifies '**priorities**' and '**potential measures**' for nature recovery, taking into account wider benefits and nature-based solutions.



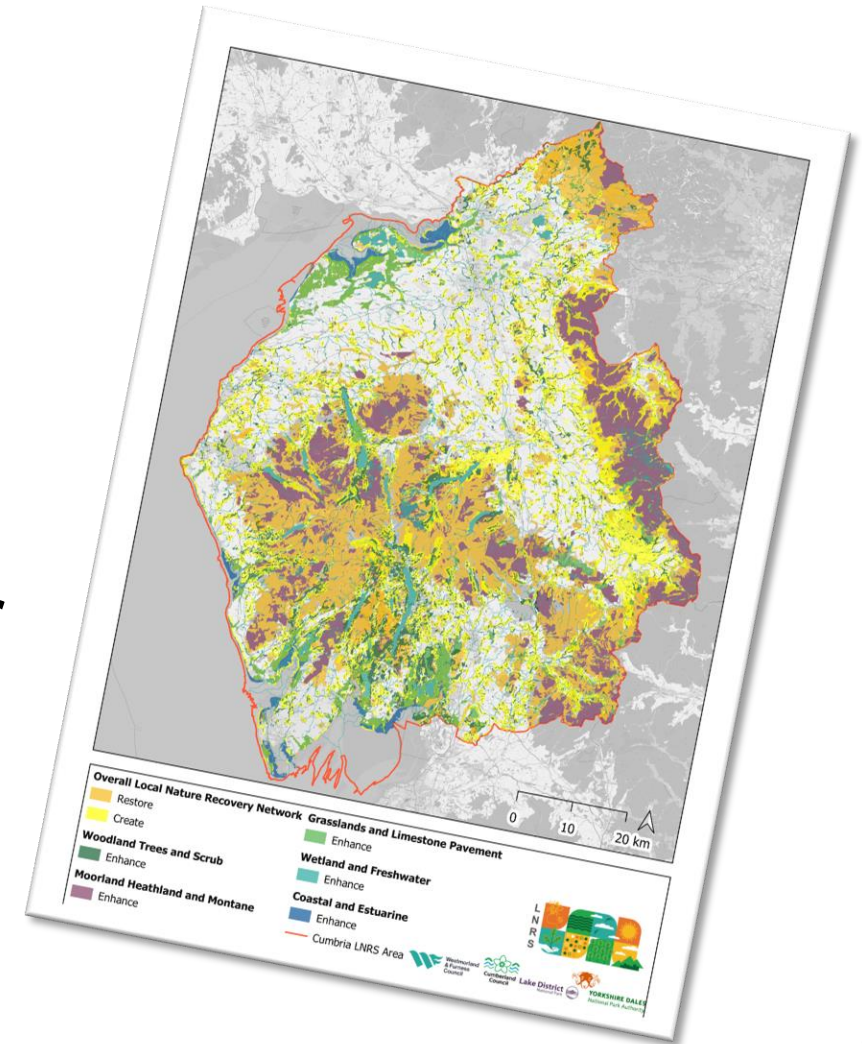
The **priorities** are what we see as being the most important things to achieve in order to deliver nature recovery.

The **measures** are the actions that if taken, would help to deliver the priorities of the LNRS



Local Habitat Map

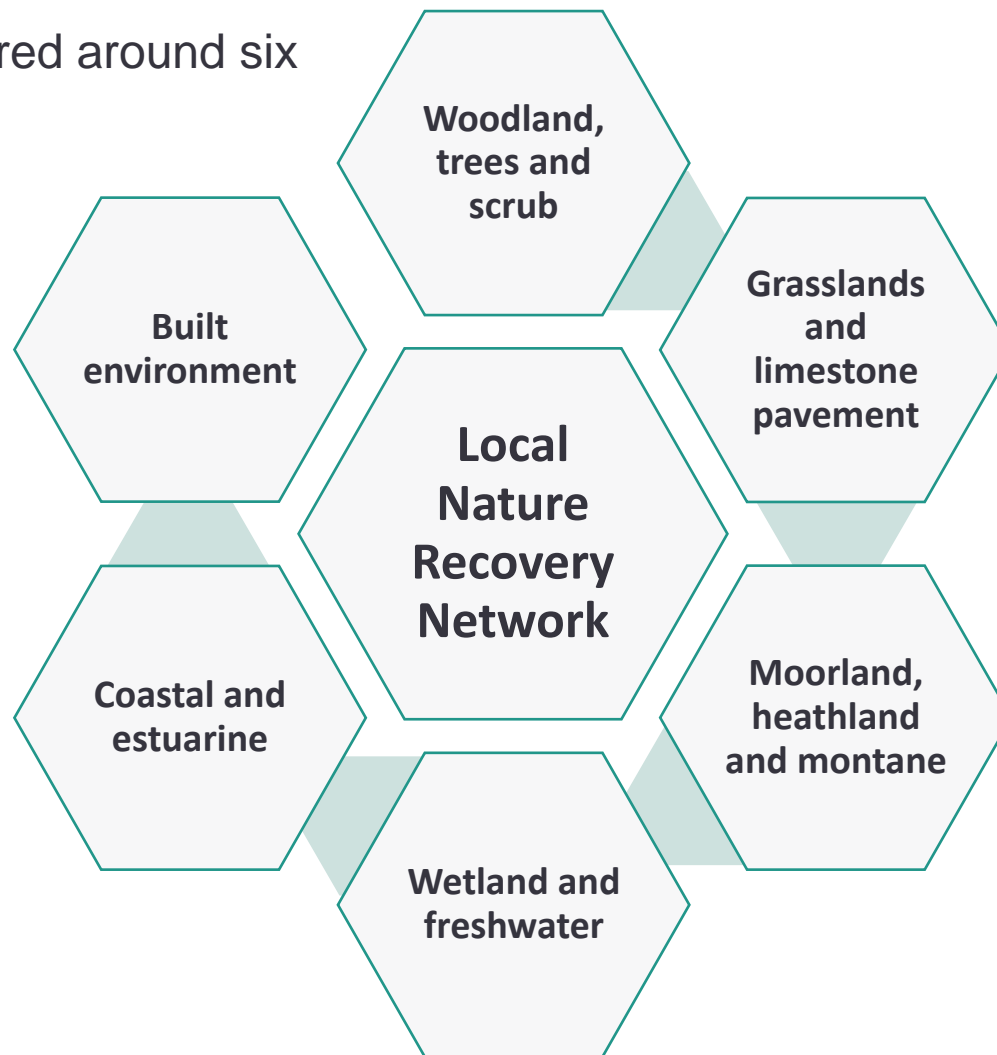
- Shows our mappable potential measures as **nature recovery networks**:
 - Existing wildlife-rich habitats that we can **enhance**, and areas where we should **restore or create** wildlife-rich habitats to make them bigger, better and more joined up
- Shows our **Areas of Particular Importance for Biodiversity**:
 - Irreplaceable habitats and designated sites
- Shows our **Areas that Could Become of Particular Importance**:
 - The parts of the nature recovery networks that are not already Areas of Particular Importance for Biodiversity



How is the LNRS structured?

The LNRS has been structured around six key habitat themes.

For each habitat theme, there is a **vision**, a small number of **priorities**, and **potential measures** to achieve these priorities. **There are also several overarching priorities and measures.**



Key themes such as benefits to **species**, **people**, the **farming** community, **education**, **tourism** and **businesses** are considered throughout.



Species

- Most species will markedly benefit from the LNRS in general
- Approximately 390 species were identified as needing more targeted interventions. These have been sorted into **24 habitat-based assemblages**, which fit under the 6 habitat themes
- **24 LNRS priority species** (or species groups) requiring bespoke actions were identified
- Measures for species recovery are embedded within the relevant habitat sections of the Statement of Biodiversity Priorities



What will the LNRS do (and not do)?

Megan Lindeman



What will the LNRS do?

- The LNRS is a strategy that **identifies opportunities** for nature recovery. Rather than tell you what *must* be done, it tells you what *could* be done.
- It is designed to **align with existing guidance and policies**, and to inform future documentation.
- It can be used as a decision-making tool to **guide and inform development**, land management, and green finance.
- It also **gives consideration to wider environmental, economic, and social benefits**.
- It is **locally led, evidence based, and collaboratively produced**.



What is the LNRS not?

- **The LNRS is not a Delivery Plan.** It identifies opportunities for nature recovery at a landscape scale, but it does not replace the need for site specific delivery plans or field surveys.
- **The LNRS is non-binding;** Responsible Authorities must prepare an LNRS, but they are not required to deliver the opportunities identified.
- **The LNRS does not confer any level of protection.** Nor does it prevent other land uses such as farming or development.
- **The LNRS does not give permission to create habitat** without consulting specialists in historic environment, landscape, access, ecology etc.



Introduction to the Local Habitat Map

Megan Lindeman



Opening the Local Habitat Map

Cumbria LNRS Habitat Mapping

(DRAFT - Not for wider circulation)

To learn more about the Cumbria Local Nature Recovery Strategy (LNRS) and how you can get involved please contact: Cumbria.LNRS@westmorlandandfurness.gov.uk

- ☒ Cumbria LNRS Boundary
- ☒ LNRS Networks by Habitat Theme
- ☒ Coastal and Estuarine
- ☒ Wetland and Freshwater
- ☒ Moorland, Heathland and Montane
- ☒ Grasslands and Limestone Pavement
- ☒ Woodland Trees and Scrub
- ☒ Not allocated
- ☒ Other Statutory LNRS Layers
- ☐ Areas of Particular Importance for Biodiversity (APIB)
- ☐ Areas Could Become of Particular Importance (ACBI)
- ☒ Additional Non-Statutory Information
- Local Authority Districts May 2024
- ☐ Boundaries UK BFE - LAD MAY 2024 UK BFE

Cumbria Local Nature Recovery Strategy (LNRS) Interactive Map - Illustration and Guidance Notes

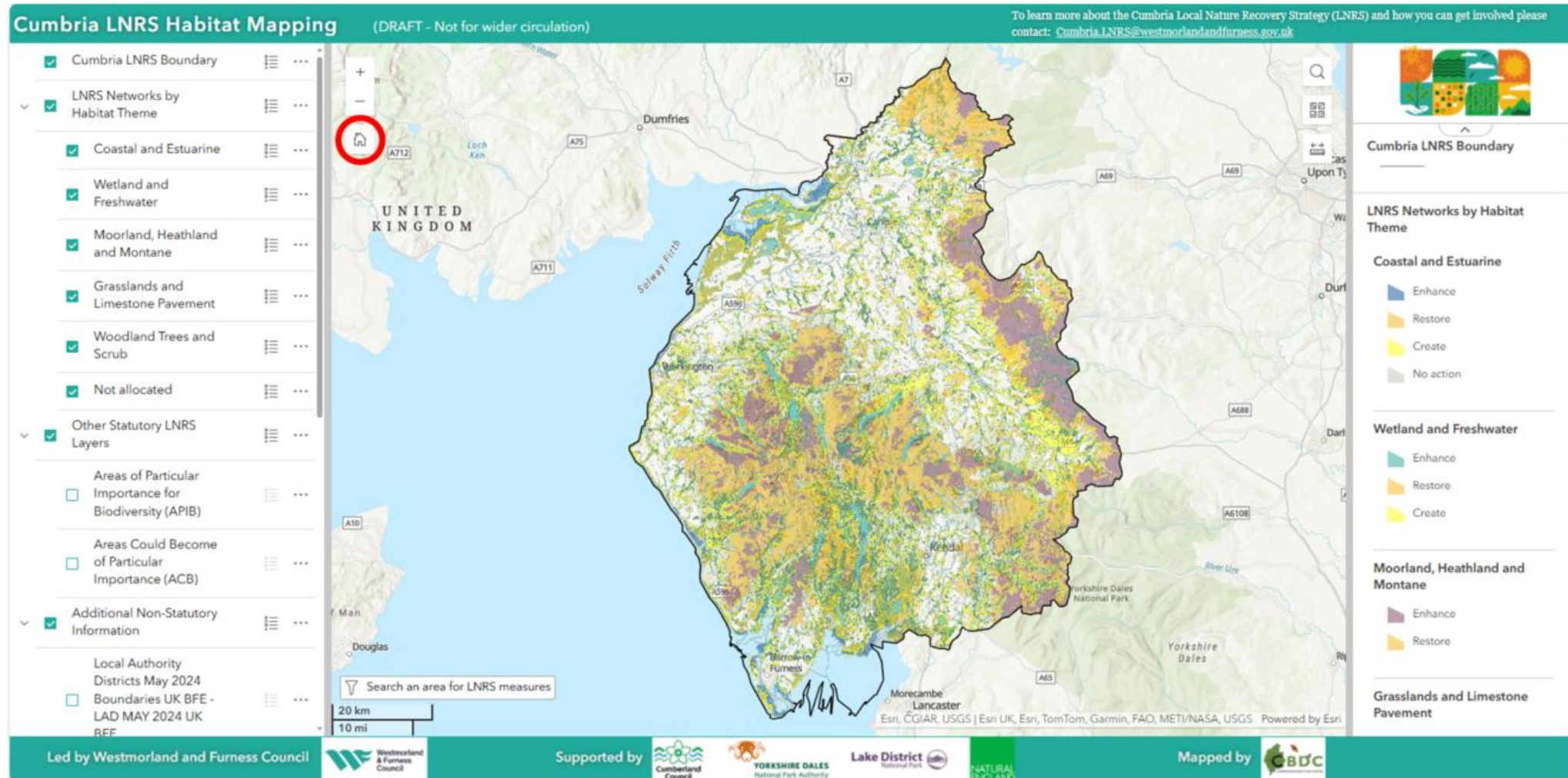
Cumbria LNRS Habitat Mapping

Local Habitat Map: User Information - View the user guide for the local habitat map.

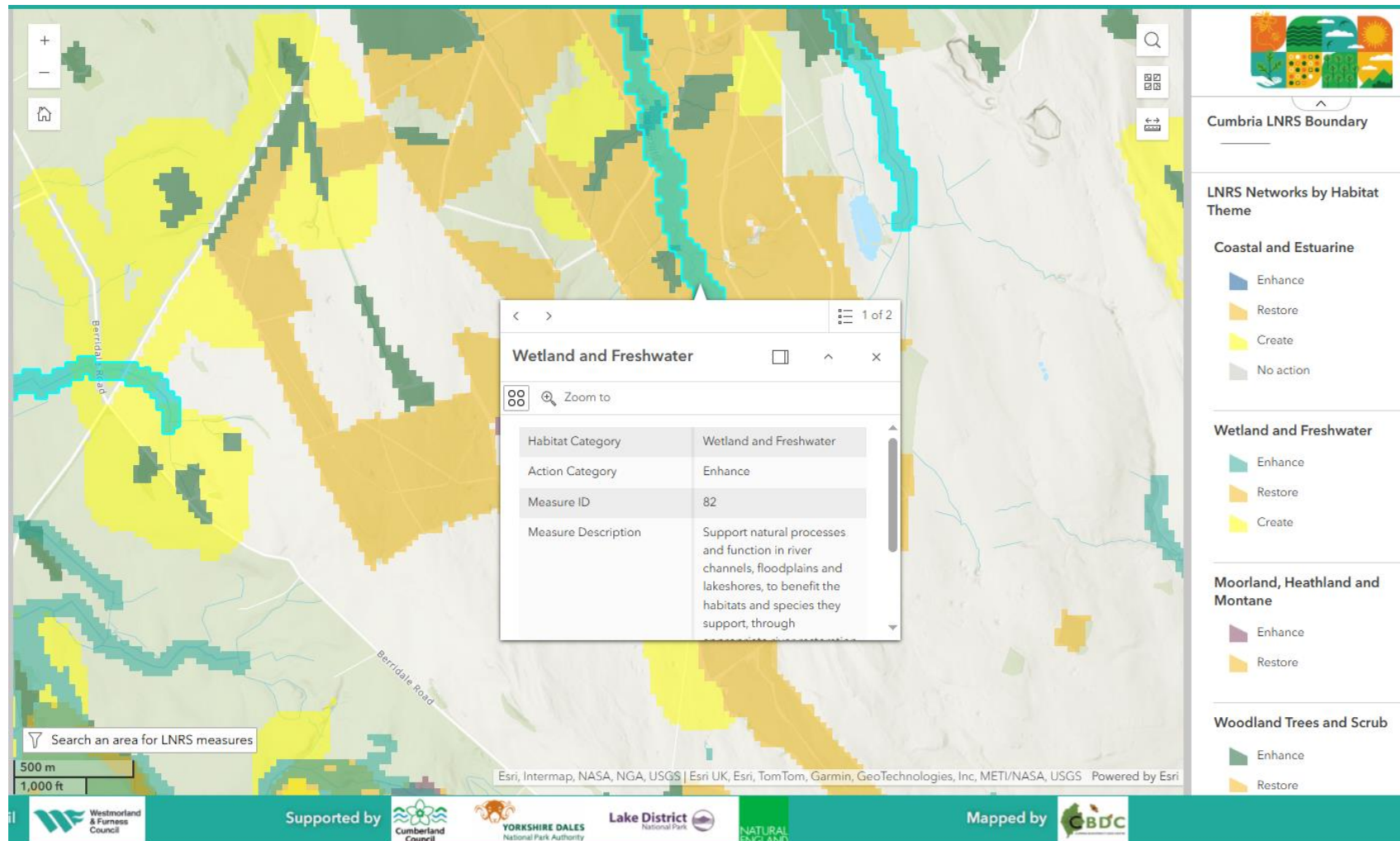
- The local habitat map identifies zones within which opportunities for nature recovery are strategically significant at a landscape scale. It **does not operate at a field scale resolution**, but it can show how nature recovery on your land fits into the wider landscape. The local habitat map **does not mandate any requirement** to implement the identified potential measures.
- The **Statement of Biodiversity Priorities and the Local Habitat Map** are designed to be used together when informing decision-making. Where [...] is displayed on the map, additional detail on this potential measure can be found in the Statement of Biodiversity Priorities.
- Any nature recovery projects must be informed by detailed site-specific feasibility studies, comply with legal requirements and regulatory policy, and should follow standards, guidance, and good practice, in line with our **LNRS principles for nature recovery**.
- Where an area of land is suitable for more than one potential measure, the local habitat map shows multiple overlapping potential measures. **Prioritisation of measures should be decided on a site-by-site basis**, taking into consideration wider benefits, funding, site surveys, and viability.
- Some areas of the map won't have any potential measures mapped. There are still many things that can still be done for nature recovery in these areas, with over 70% of the potential measures in the strategy unmapped due to them being beneficial almost anywhere.
- Just because a measure isn't mapped in a certain area doesn't mean that it isn't suitable. Either that isn't the most strategically important location for that measure to take place, or there is insufficient information to be able to map the potential measure to that location.
- The local habitat map is based on the best available data at the time of publication. In order to improve our local habitat map, we need to increase the quality and quantity of data we have for habitat type, extent and condition. We encourage anyone who is collecting habitat or species data in Cumbria to share it with Cumbria Biodiversity Data Centre (CBDC) - info@cbdc.org.uk - so that it can be added to their database and help to improve our understanding of the state of nature in our county.



Exploring the Local Habitat Map



Using the Local Habitat Map



Public Consultation Overview

Nicola Jordan





Public Consultation

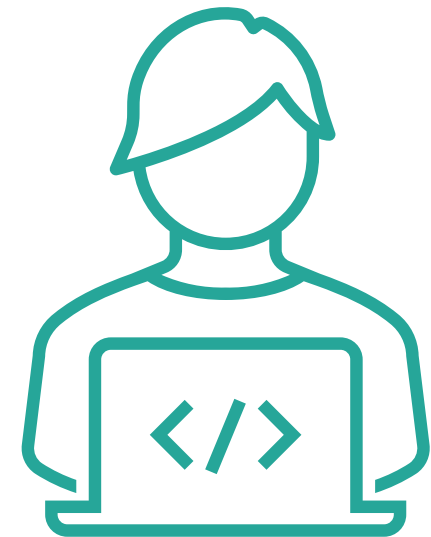
- We want to hear from you to make sure that the LNRS **captures local knowledge and insight** and remains collaboratively developed and locally led.
- The LNRS should be ambitious and explore the opportunities to make more space for nature in Cumbria...
... but we need ensure that the priorities and potential measures identified are **realistic, achievable, and reflect local people's wants and needs**, as well as and their culture and heritage.



Completing the Public Consultation

- The Statement of Biodiversity Priorities and the Local Habitat Map are **available to view online** on the Cumbria LNRS website <https://cumbrialnrs.org.uk>
- The public consultation contains a series of questions on each section of the LNRS. You can respond to all sections, or just the parts that are relevant to you.
- The **consultation should be completed online**, but please do contact us if you have any accessibility requirements to discuss options.

The public consultation will run from 12th May – 22nd June 2025



Consultation Events

- We are running these **online sessions** every Friday for anyone wanting more information on the LNRS and the public consultation. These are open to everyone interested in hearing more and asking any questions specifically around the consultation process
- **Drop in events** will be taking place at our libraries and Westmorland and Furness Council anchor buildings (please visit the website for the most up to date information)
- Please sign up to our **newsletter** to keep informed of the latest updates and events by emailing: cumbria.lnrs@westmorlandandfurness.gov.uk
- We welcome you promoting the LNRS at your own business or community events so please get in touch if there's any information you need to support you



Post Consultation

- **Reviewing Your Feedback**
- **Expert Panel:** Technical specialists in Nature Recovery and our Steering Group members will assess all responses.
- **Scoring Matrix:** Responses evaluated against:
 - Alignment with LNRS strategic and legal objectives.
 - Consistency with evidence used to develop the draft LNRS.
- **Outcome:** A consultation response will be published on the LNRS website with the final LNRS publication expected in late 2025.



Questions and/or Comments?



Stay involved



More information on the
LNRS can be found at
cumbrialnrs.org.uk



Email us at
[Cumbria.LNRS@
westmorlandandfurness.
gov.uk](mailto:Cumbria.LNRS@westmorlandandfurness.gov.uk)



Complete our public
consultation at
bit.ly/cumbrialnrs

Thank You

